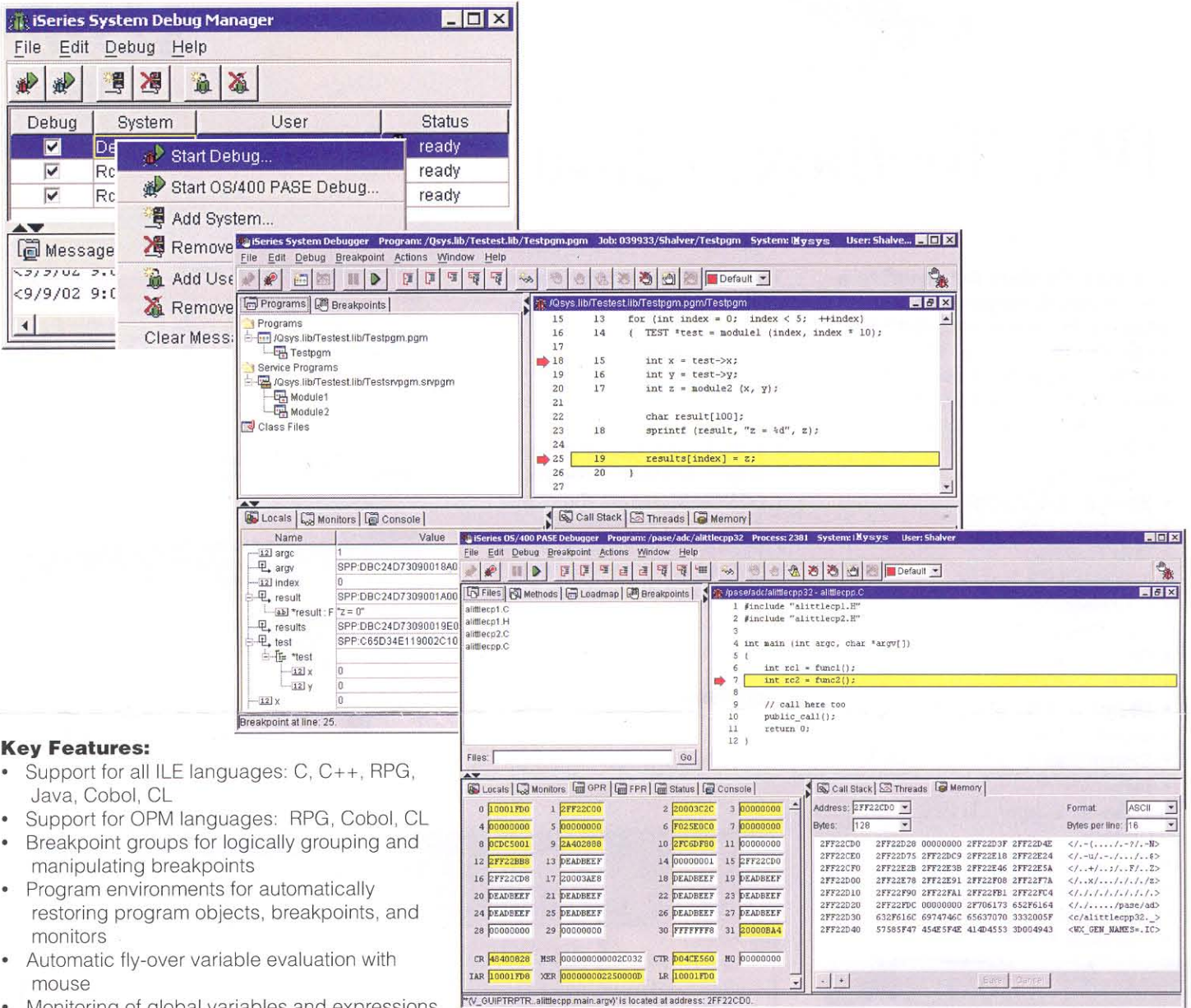


# iSeries System Debugger and iSeries OS/400 PASE Debugger



## Key Features:

- Support for all ILE languages: C, C++, RPG, Java, Cobol, CL
- Support for OPM languages: RPG, Cobol, CL
- Breakpoint groups for logically grouping and manipulating breakpoints
- Program environments for automatically restoring program objects, breakpoints, and monitors
- Automatic fly-over variable evaluation with mouse
- Monitoring of global variables and expressions
- Hardware "watch" support of global variables
- Local variable display
- Hexadecimal memory display
- Program call stack display
- Program thread display
- Advanced stepping options
- Point and click breakpoint manipulation
- Conditional and thread specific breakpoint support

## Installation:

- Latest PTF's V5R2 (Server - SI07749, SI07934) (Client - SI07967)
- Latest PTF's V5R1 (Server - SI05799) (Client - SI06031)
- Requires Java Runtime Environment 1.3
- Place tes.jar, jt400.jar, and jhall.jar in your classpath
- Invoke with following: java utilities.DebugMgr or java utilities.Debug -s system -u user

tes.jar - iSeries System Debugger (/QIBM/ProdData/HTTP/public/jt400/lib/tes.jar)  
 jt400.jar - iSeries Toolbox for Java (/QIBM/ProdData/HTTP/public/jt400/lib/jt400.jar)  
 jhall.jar - Java Help (http://java.sun.com/products/javahelp/)



©International Business Machines Corporation  
 2000, 2001, 2002, 2003

Printed in the United States of America  
 09-98, 01-99, 02-00, 10-00, 09-01, 04-02, 09-02,  
 03-03  
 All Rights Reserved

© IBM and iSeries are registered trademarks of  
 the IBM Corporation in the United States or  
 other countries or both.

Java is a trademark of Sun Microsystems, Inc.